

EPSON®
EXCEED YOUR VISION

T

SureColor® T-Series

Epson SureColor T3270

Epson SureColor T5270 | T5270D

Epson SureColor T7270 | T7270D



Precision. Performance. Brilliance.

Never before has there been a large-format color imaging system capable of producing precise technical drawings, brilliant full-color posters, and eye-catching retail display signage — while also retaining the flexibility to grow with you as your business thrives.

Introducing the new Epson® SureColor T-Series

Developed using the latest advancements in performance imaging, like our exotic Epson PrecisionCore® TFP® printhead, robust media handling, optional 36"-wide multifunction copy, scan, and share technologies, along with our breakthrough pigment ink technology — Epson UltraChrome® XD — the SureColor T-Series could be the way you print your next big idea.

The SureColor T-Series is designed exclusively for use with our Epson UltraChrome XD Ink and not for use with any other brands of inks or cartridges.

SureColor T-Series

T



Single Roll



Versatile Workgroup Printers

With three single-roll printer models available in 24", 36" and 44" widths, the SureColor T-Series produces brilliant color with precise detail across a wide variety of media types and sizes. From standard plain bond paper to specialty photographic papers to even posterboards up to 1.5 mm thick, the SureColor T-Series could be the most versatile four-color printers in their class. And, because each model has three different ink cartridge sizes up to 700 mL each, you'll spend less time and money maintaining your printer.

Dual Roll



High-Volume Printers

For larger-production workgroups, the Epson SureColor T-Series printers are available in dual-roll models in both 36" and 44" widths. With support for two active rolls of media, the printer can automatically switch rolls to use the best size and type for the job. Or, you can maximize unattended print production by using two rolls of the same material — the printer will automatically switch to the second roll after the first roll is depleted, allowing for longer print runs with less media management.

Multifunction



Print, Copy, Scan and Share

As an option for any 36" or 44" SureColor T-Series printer, our multifunction system can be installed whenever your business demands it. Under the hood, the Epson REALOID image processing engine enhances scanned documents up to 36" wide in real time to improve image quality and remove unwanted background noise. The result is precise, high-speed color copying and document scanning, along with PC-free sharing to network file servers, email and even other SureColor T-Series multifunction printers within your network.

T-Series

High Performance

Speed Charts



Architectural Renderings

High-speed printing with sharp text and precise line details

Print Engine Speed*

Speed Production High Quality

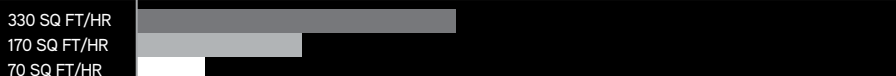


Aerial Land Photographs

Print with accurate color and fine details for clear interpretation

Print Engine Speed*

Speed Production High Quality



Promotional Displays

Produce high-impact promotions with accurate brand colors

Print Engine Speed*

Speed Production High Quality

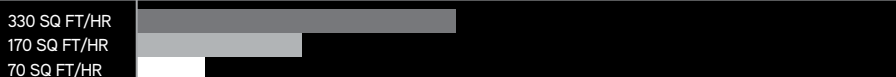


Event Posters

Create event awareness with brilliant, eye-catching color posters

Print Engine Speed*

Speed Production High Quality



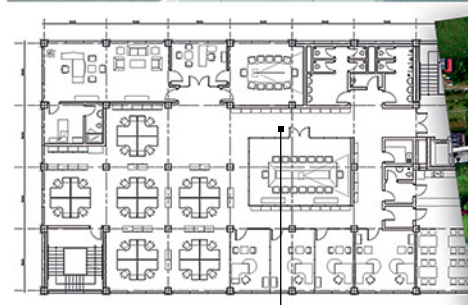
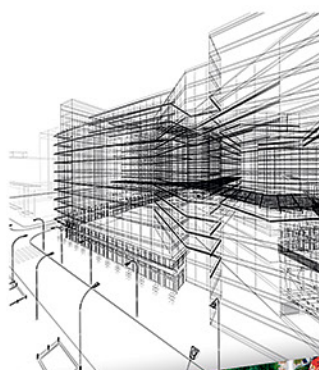
* Print speeds are based on the print engine speed only. Total throughput time for any print depends on workstation configuration, file size, print resolution, ink coverage, networking, etc. Actual print speeds will vary.

Superior Versatility

Epson SureColor T-Series printers produce professional large-format color prints across a wide range of print materials, from inexpensive plain paper to posterboard to high-impact backlight graphic films. And, with durable pigment-based inks, your prints will continue to look their best — even for short-term outdoor use.*

Dual-Black ink technology for rich blacks on virtually any media type

THE MATRIX DISTRICT A MULTI-BUSINESS COMMUNITY COMPLEX



Precise line detail and crisp text, even on plain uncoated paper

Full-color prints are highly smudge, fade and water resistant



Epson AccuPhoto™ XD screening technology produces outstanding photographic print quality



Repeatable and accurate color from print to print



Enhanced color range for brilliant color output

Epson UltraChrome XD Ink

Make an impression that will last. With a dedicated team of chemical engineers, Epson has developed a unique archival ink technology — Epson UltraChrome XD — that dries virtually in an instant with extreme smudge, fade and water resistance. Engineered to produce professional-quality prints, it delivers brilliant color and crisp lines on a wide array of media, ranging from inexpensive plain paper to premium photographic papers and archival films.

Epson UltraChrome XD Ink

Reduce printing costs with front-loading ink cartridges, available in three different capacities up to 700 mL.

The SureColor T-Series printers are designed to work exclusively with these specially-formulated Epson inks, and not with other brands of cartridges or inks.



Optional 36" Multifunction Scanner

Add high-speed copy, scan and share functionality to select SureColor T-Series printers with our full-color multifunction scanner

Straight-through Paper Path

Supports up to 1.5 mm thick posterboard

Catch Basket

High-capacity catch basket keeps prints neatly organized for quick retrieval

Advanced Image Processing

The Epson REALOID graphics engine optimizes scanned images to preserve fine details and deliver crisp color copies at exceptional speeds.



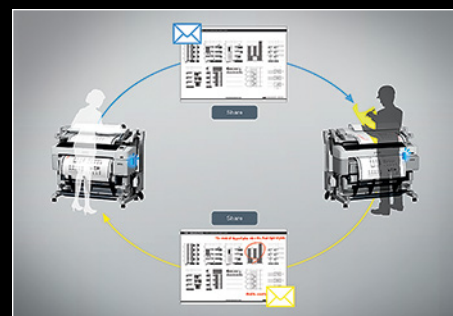
Remote System Management

Directly control copy and scan features, view scanned images and manage the printer settings remotely with the mobile-optimized Web interface.



Collaborative Document Sharing

Scan to shared network folders, scan to email or send images directly to a remote SureColor T-Series multifunction system to be printed.



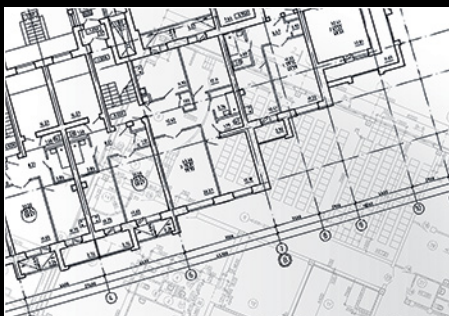
Our Most Advanced Printhead

Epson has forever changed the face of photographic imaging with our latest Epson PrecisionCore TFP printhead. And now we've brought the same technology to technical imaging. Engineered to produce better-quality prints faster and more precisely than virtually any other form of aqueous-based imaging, the Epson SureColor T-Series family produces extremely precise line detail, crisp text and true photographic-quality graphics — all at outstanding print speeds.



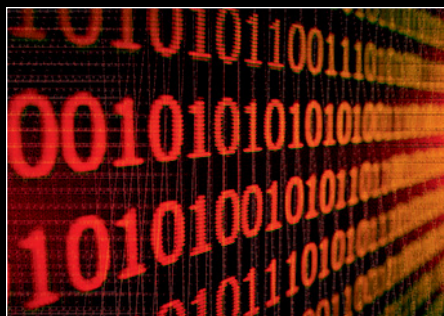
Extreme Plot Precision

Line accuracy to within ± 0.1 percent, along with print resolutions up to 2880 x 1440 dpi, allows for extremely clear full-color plots.



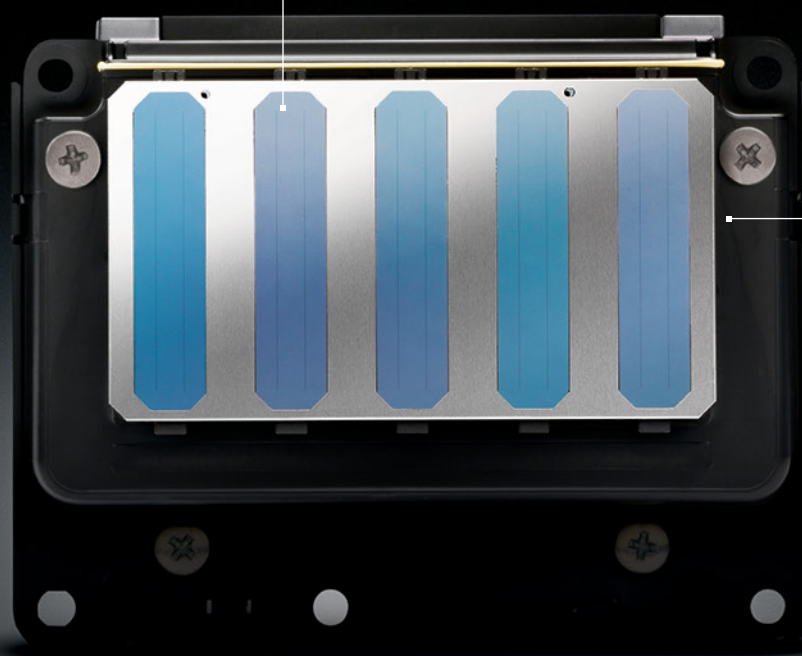
Epson Precision XD Printer Language

Compatible with both Microsoft® Windows® and Apple® Macintosh® OS X® workstations, Precision XD allows for outstanding print quality — with complete application compatibility.



PrecisionCore TFP Printhead

Based on our exotic Thin Film Piezo (TFP) technology, our most advanced printhead delivers extremely precise line detail, along with outstanding photographic graphics



Enhanced variable-size ink droplet technology as small as 3.5 picoliter for outstanding tonal gradients and blends

AccuPhoto XD Screening

Advanced screening technology produces outstanding prints, previously only possible from 6-color printers.



Print Speed

Quickly produce an A1/D-size print in as little as 25 seconds and up to 110 A1/D-size prints per hour¹.



Optional Adobe® PostScript® 3™

True Adobe PostScript 3 engine delivers unmatched workflow compatibility and secure PDF printing.



Horizontal Print Stacker

Neatly stack and organize up to 20 printed pages of varying sizes and different material types for quick retrieval.



Media Compatibility

Supports a wide range of media types in rolls and sheets, and even prints directly onto rigid posterboard up to 1.5 mm thick.



Advanced Network Security

Keep print data safe with easy integration into secure network environments supporting IPsec and IEEE 802.1x authentication network protocols.



World-Class Support

Local service providers with certified technicians and Epson Global support all from one company — Epson.



Internal Print Server

An optional 320GB internal print server for enhanced workgroup productivity, including the ability to reprint saved jobs and more.



Control Panel

Full-color, 2.7" display for various printer controls and maintenance, along with a complete built-in help system to guide users through routine tasks.



T-Series

Highlight Details

Specs

Feature	Description
Dimensions and Weight	SC-T3270 Printer 42" (W) x 30" (D) x 44" (H) 148 lb SC-T5270 / SC-T5270D Printer 56" (W) x 30" (D) x 45" (H) 186 lb (Single Roll), 261 lb (Dual Roll) SC-T7270 / SC-T7270D Printer 64" (W) x 30" (D) x 45" (H) 203 lb (Single Roll), 294 lb (Dual Roll) Dimensions and weight include printer and stand
Printing Technology	PrecisionCore TFP Printhead Variable-Size Ink Droplet Technology — Smallest droplet size of 3.5 picoliters Nozzle Configuration — 720 nozzles per color (x 5) Maximum Resolution — 2880 x 1440 dpi
Line Quality	Line Accuracy of ±0.1% Minimum Line Width: 0.018 mm
Scanning Technology (Optional Module)	Scan Resolution: up to 600 dpi, stored in JPEG or PDF format Scan Speed ¹ : up to 12" per sec in 24-bit color Maximum Scan Area: 36" x 96" with maximum thickness up to 1.3 mm Copy/Scan Modes: Text/Line Drawing, Tracing Paper, Recycled Paper, Blueprint and Poster Maximum Copies: up to 99 copies Reduction/Enlargement: Auto, or 25-400% in 1% increments
Printer Interface	Includes as standard one Hi-Speed USB 2.0 (1.1 compatible) and one Gigabit Ethernet Port (10/100/1000 Base-T) with support for TCP/IP IPv4 and IPv6, Apple® Bonjour®, FTP, WSD, RAW IP, LPD, IPsec, SSL/TLS and IEEE 802.1X authentication protocols
Printer Language	Epson Precision XD and Native HPGL/2 and HP-RTL Optional Adobe PostScript 3 Hardware Module supports PS, EPS, PDF, JPEG, TIFF and CALS G4 file formats
Included Software	Epson Professional Imaging Print Drivers for Windows and Macintosh Epson Printer Utilities Epson Job Accounting Software Epson LFP Print Plug-in for Microsoft Office
Operating Systems Supported	Microsoft Windows 10, Windows 8, Windows 7, Windows Server® 2012, Windows Server 2008, Mac OS® X 10.10, 10.9, 10.8, and 10.7 The Epson SureColor T-Series printers are supported by most leading third-party RIPs and workflows.
Media Handling	SC-T3270 Series Roll media from 10" to 24" wide on 2" or 3" core Cut-Sheet from 8.27" to 24" wide SC-T5270 Series Roll media from 10" to 36" wide on 2" or 3" core Cut-Sheet from 8.27" to 36" wide SC-T7270 Series Roll media from 10" to 44" wide on 2" or 3" core Cut-Sheet from 8.27" to 44" wide All printers support media from 0.08 mm to 1.5 mm thick rigid posterboard. Roll media up to 5.9" in diameter. Borderless printing available for papers 10", 11.8", 13", 16", 17", 20.3", 23", 24", 29", 33", 36", 41" and 44" wide. Maximum printable length is limited by software application, operating system, media length and RIP used
Epson UltraChrome XD Ink	Cartridge fill volumes — 110 mL, 350 mL, or 700 mL each color x 5 colors total Ink cartridge shelf life (recommended) — 2 years from printed production date or 6 months after open
What's in the Box	Printer Stand with Integrated Stacking Catch Basket Set of five 110 mL Ink Cartridges Power Cord User Guide Kit Roll Media Adapters
Electrical Requirements	Voltage: AC 100 – 240 V Frequency: 50 – 60 Hz
Power Consumption	Operating: SC-T3270 52 W SC-T5270 60 W SC-T5270D 61 W SC-T7270 64 W SC-T7270D 65 W Sleep: Less than 3 W Power Off: Less than 0.5 W
Regulatory Standards	UL (MET), FCC (Class A), CSA, TCSCA, CE, EMC and ENERGY STAR® 2.0
Operating Conditions	Temperature: 50° to 95°F Relative Humidity: 20 – 80% (no condensation)
Optional Accessories	Multifunction Scanning Module (SC-T5270 / SC-T5270D / SC-T7270 / SC-T7270D only) Adobe Postscript 3 Hardware Module Internal 320GB Print Server Take-up Reel System (SC-T7270 only)
Limited Warranty and Service	Standard one-year, on-site, usually next-business-day service with toll-free phone support Monday through Friday Optional Epson Preferred SM Plus Service programs available to extend coverage for up to two years beyond the initial warranty period

¹ Print and scan speeds for a single page and for square feet per hour are based on print engine speed only. For A1/D-size prints, the SC-T3270 prints slightly slower than the SC-T5270 and SC-T7270. Total throughput time for any print depends on workstation configuration, file size, print resolution, ink coverage, networking, etc. Actual print speeds will vary.

Professional Imaging



Better Products for a Better Future™

For more information on Epson's environmental programs, go to
eco.epson.com

Epson America, Inc. 3840 Kilroy Airport Way, Long Beach, CA 90806
Epson Canada Limited 185 Renfrew Drive, Markham, Ontario L3R 6G3

Please visit us at proimaging.epson.com

EPSON, PrecisionCore, SureColor, TFP and UltraChrome are registered trademarks, EPSON Exceed Your Vision is a registered logomark and Better Products for a Better Future is a trademark of Seiko Epson Corporation. AccuPhoto is a trademark and Epson Preferred is a service mark of Epson America, Inc. Apple, Bonjour, Mac, Mac OS, Macintosh and OS X are trademarks of Apple Inc., registered in the U.S. and other countries. All other product and brand names are trademarks and/or registered trademarks of their respective companies. Epson disclaims any and all rights in these marks. Copyright 2015 Epson America, Inc. CPD-41150 XXK 10/15 XX